

fast

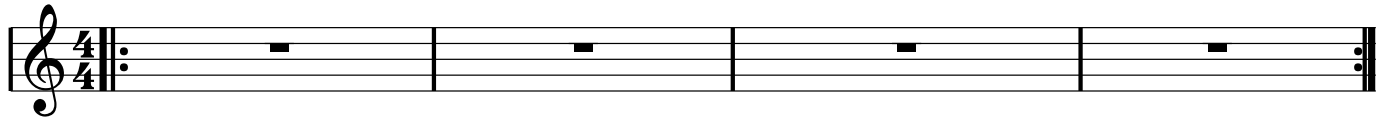
Jam

fast minor blues

Stephan Urwyler

Eb

drums solo



A musical score for guitar and bass. The top staff is the melody in G minor (one flat), starting with an Am chord. The middle staff is the bass line, starting with a D7/Eb chord. The bottom staff is the guitar accompaniment, starting with an F7 chord. The piece consists of 12 measures. Chord changes are indicated above the notes: Am (measures 1-2), D7/Eb (measures 3-4), Am (measures 5-6), E7 (measures 7-8), D7 (measures 9-10), and E7 (measures 11-12). The piece ends with a double bar line and repeat dots.

A single musical staff in G minor, starting with an Am chord. It contains four measures of music, ending with a double bar line and repeat dots.