

I CAN'T TURN YOU LOOSE (BLUES BROTHERS)

ROCK STRAIGHT 8TH ♩ = 144

INTRO

2

7

C

THEMA

11

15

C7

OPEN FOR SOLOS & BACKGROUND

19

23

F7⁹

27

C7¹³

31

G7⁹

F7

35

C7

39

AFTER SOLOS

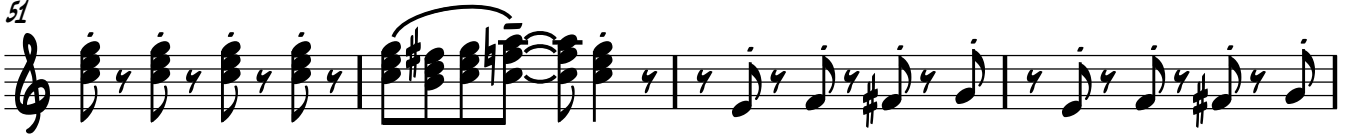
43



47



51



55

