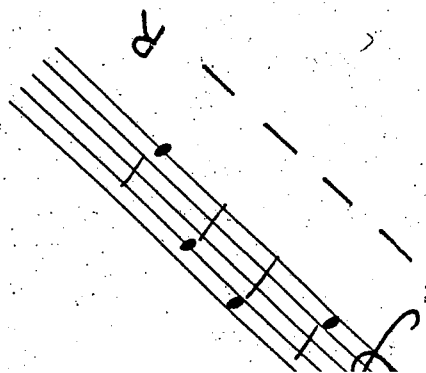
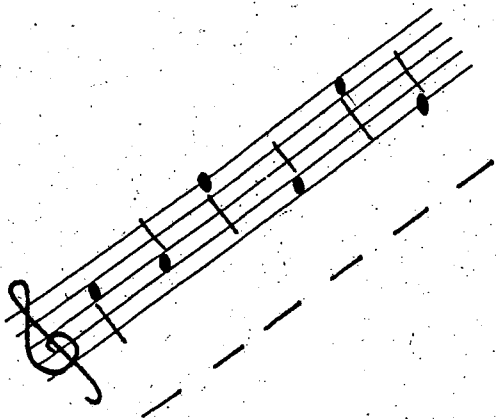
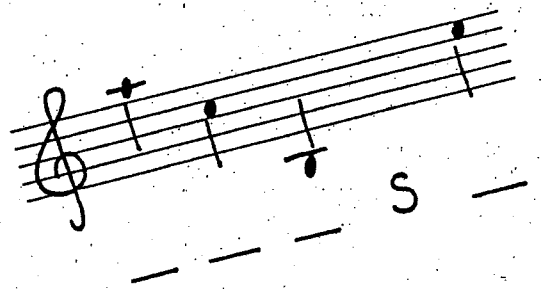
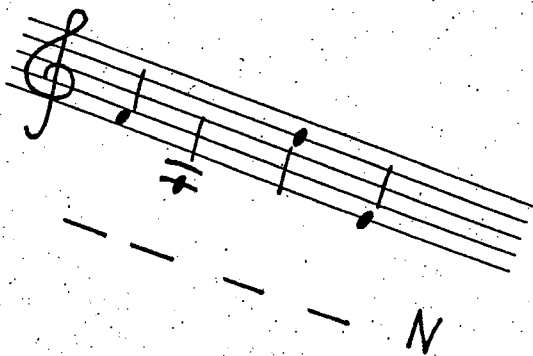
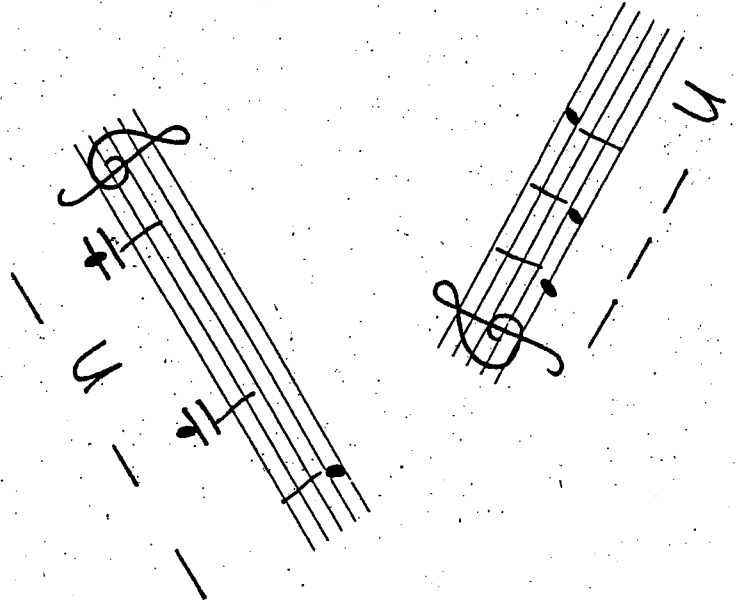
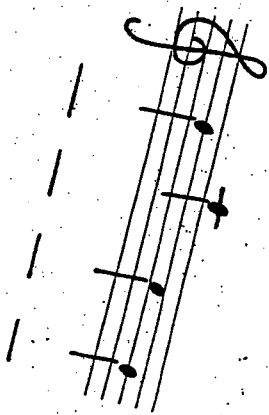
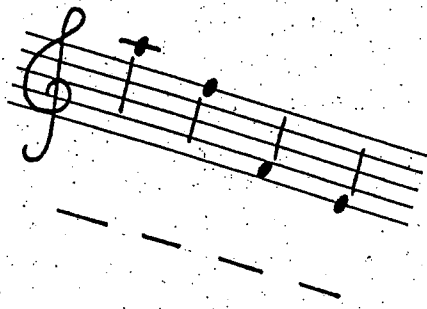
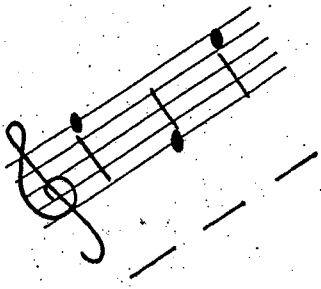
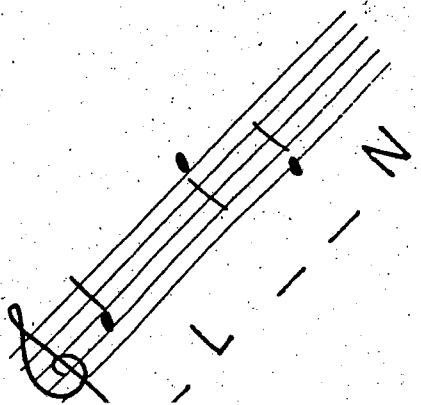
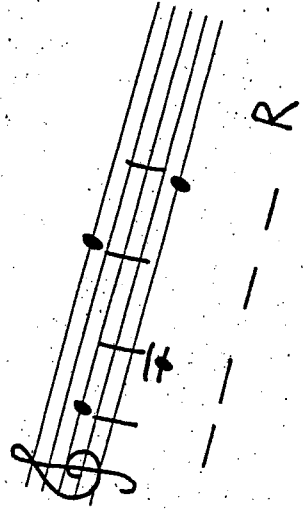
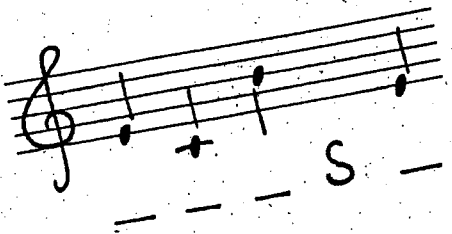
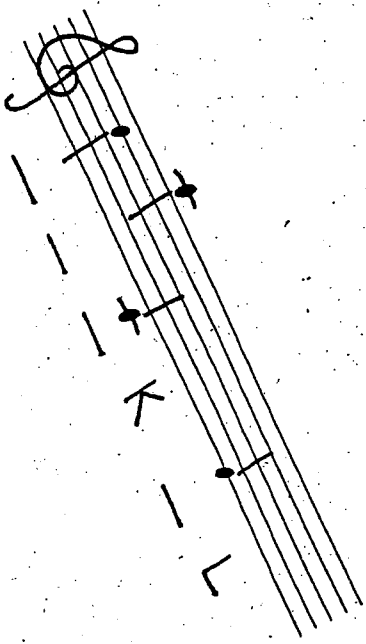
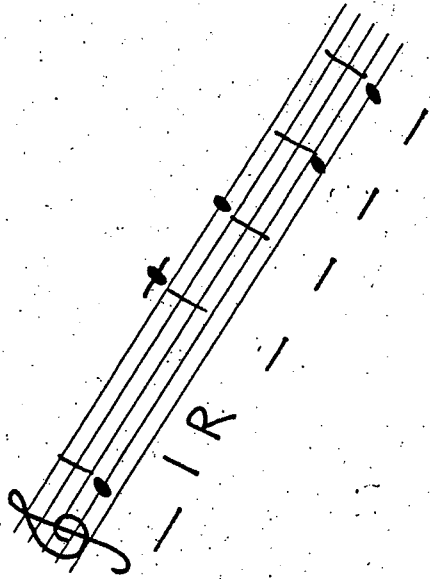
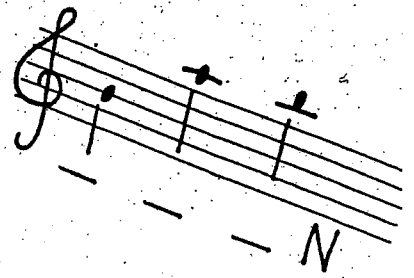
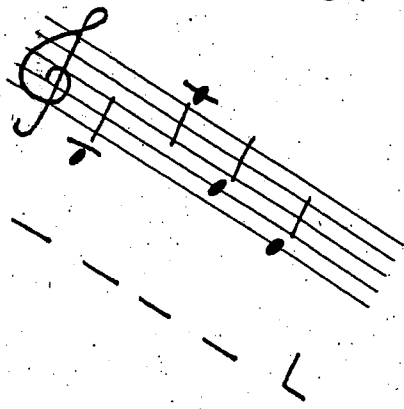


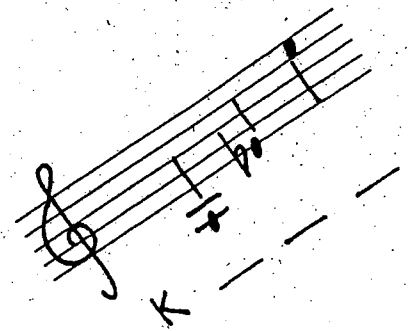
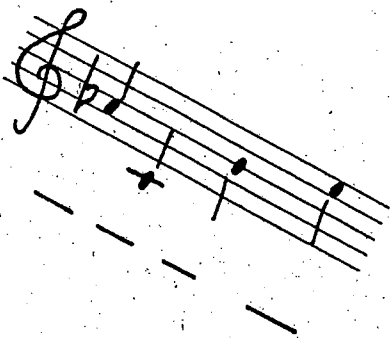
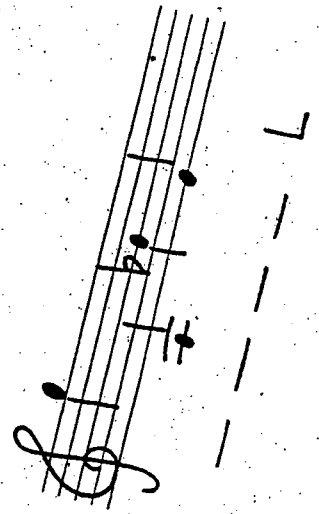
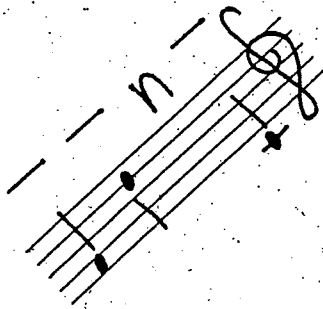
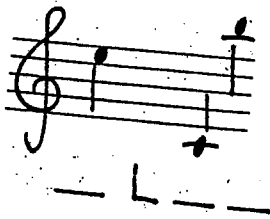
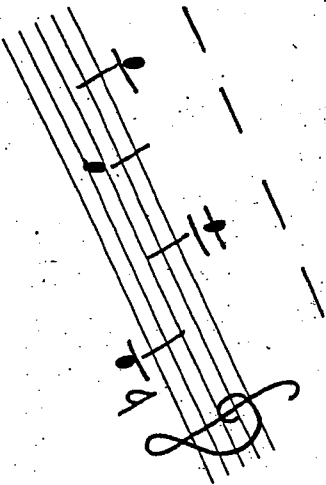
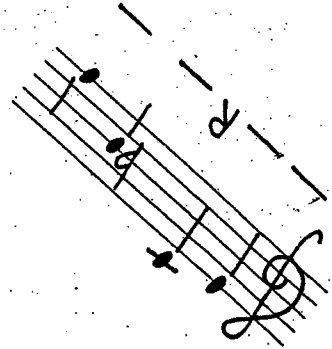
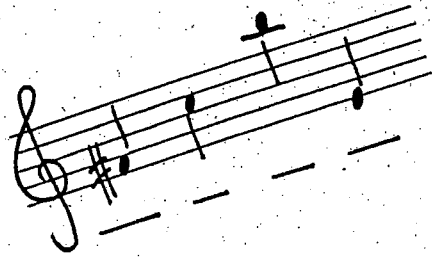
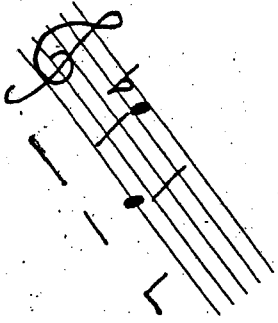
Kannst du diese Wörter lesen?



Kannst du diese Wörter lesen?



Kannst du diese Wörter lesen?



Kannst du diese Wörter lesen?

A musical staff in treble clef with a key signature of one flat (B-flat). It contains four quarter notes: B-flat, A, G, and F. Below the staff is a dashed line with the letter 'R' underneath it.

A musical staff in treble clef with a key signature of one flat (B-flat). It contains four quarter notes: B-flat, A, G, and F. Below the staff is a dashed line with the letter 'R' underneath it.

A musical staff in treble clef with a key signature of one flat (B-flat). It contains four quarter notes: B-flat, A, G, and F. Below the staff is a dashed line with the letter 'L' underneath it.

A musical staff in treble clef with a key signature of one flat (B-flat). It contains four quarter notes: B-flat, A, G, and F. Below the staff is a dashed line with the letters 'O', 'N', and 'N' underneath it.

A musical staff in treble clef with a key signature of one flat (B-flat). It contains four quarter notes: B-flat, A, G, and F. Below the staff is a dashed line with the letter 'R' underneath it.

A musical staff in treble clef with a key signature of one flat (B-flat). It contains four quarter notes: B-flat, A, G, and F. Below the staff is a dashed line with the letters 'S', 'N', and 'L' underneath it.

A musical staff in treble clef with a key signature of one flat (B-flat). It contains four quarter notes: B-flat, A, G, and F. Below the staff is a dashed line.

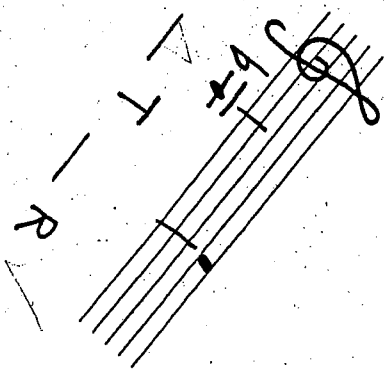
A musical staff in treble clef with a key signature of one flat (B-flat). It contains four quarter notes: B-flat, A, G, and F. Below the staff is a dashed line with the letter 'N' underneath it.

A musical staff in treble clef with a key signature of one flat (B-flat). It contains four quarter notes: B-flat, A, G, and F. Below the staff is a dashed line.

A musical staff in treble clef with a key signature of one flat (B-flat). It contains four quarter notes: B-flat, A, G, and F. Below the staff is a dashed line with the letters 'I' and 'N' underneath it.

A musical staff in treble clef with a key signature of one flat (B-flat). It contains four quarter notes: B-flat, A, G, and F. Below the staff is a dashed line with the letter 'R' underneath it.

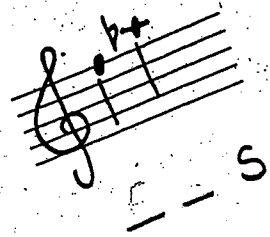
Kannst du diese Wörter lesen?



A musical staff in treble clef with a key signature of one sharp (F#). The notes are G4, A4, B4, and C5. Below the staff are the letters R, T, and A, each aligned with a note.



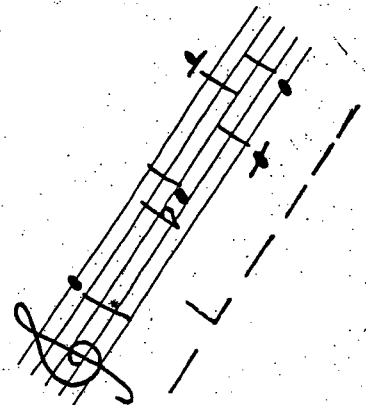
A musical staff in treble clef with a key signature of one sharp (F#). The notes are G4, A4, B4, and C5. Below the staff are the letters R, T, and A, each aligned with a note.



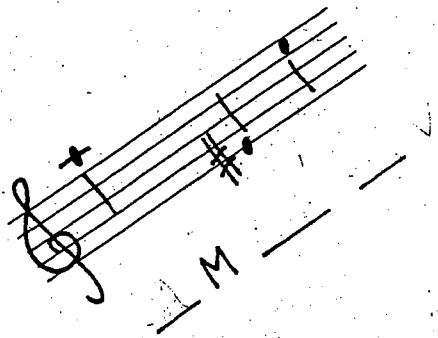
A musical staff in treble clef with a key signature of one sharp (F#). The notes are G4, A4, B4, and C5. Below the staff is the letter S, aligned with the final note.



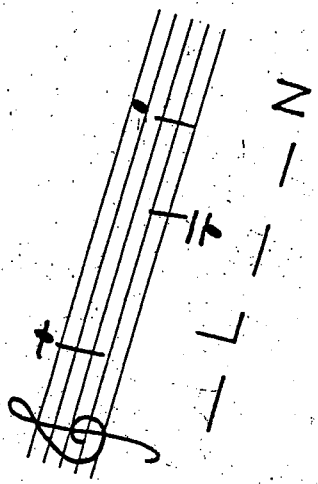
A musical staff in treble clef with a key signature of one sharp (F#). The notes are G4, A4, B4, and C5. Below the staff are the letters L, R, and M, each aligned with a note.



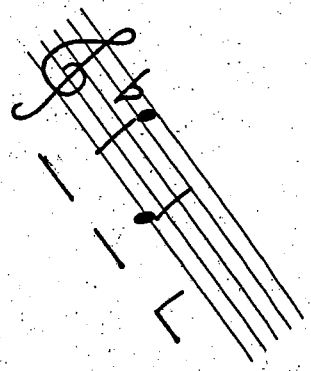
A musical staff in treble clef with a key signature of one sharp (F#). The notes are G4, A4, B4, and C5. Below the staff is the letter L, aligned with the final note.



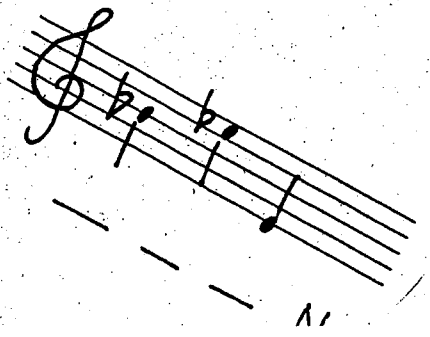
A musical staff in treble clef with a key signature of one sharp (F#). The notes are G4, A4, B4, and C5. Below the staff is the letter M, aligned with the final note.



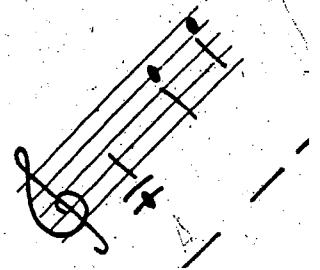
A musical staff in treble clef with a key signature of one sharp (F#). The notes are G4, A4, B4, and C5. Below the staff are the letters L and N, each aligned with a note.



A musical staff in treble clef with a key signature of one sharp (F#). The notes are G4, A4, B4, and C5. Below the staff is the letter L, aligned with the final note.



A musical staff in treble clef with a key signature of one sharp (F#). The notes are G4, A4, B4, and C5. Below the staff is the letter N, aligned with the final note.



A musical staff in treble clef with a key signature of one sharp (F#). The notes are G4, A4, B4, and C5. Below the staff is the letter L, aligned with the final note.

Kannst du diese Wörter lesen?

A musical staff in treble clef with a key signature of one sharp (F#). It contains two notes: a quarter note on the second line (G4) and a quarter note on the second space (A4). Below the staff, the letters 'K' and 'L' are written under dashed lines.

A musical staff in treble clef with a key signature of one sharp (F#). It contains three notes: a quarter note on the second line (G4), a quarter note on the second space (A4), and a quarter note on the third line (B4). Below the staff, the letter 'K' is written under a dashed line.

A musical staff in treble clef with a key signature of one sharp (F#). It contains two notes: a quarter note on the second line (G4) and a quarter note on the second space (A4). Below the staff, the letter 'V' is written under a dashed line.

A musical staff in treble clef with a key signature of one sharp (F#). It contains two notes: a quarter note on the second line (G4) and a quarter note on the second space (A4). Below the staff, the letter 'L' is written under a dashed line.

A musical staff in treble clef with a key signature of one sharp (F#). It contains two notes: a quarter note on the second line (G4) and a quarter note on the second space (A4). Below the staff, the letters 'K' and 'L' are written under dashed lines.

A musical staff in treble clef with a key signature of one sharp (F#). It contains two notes: a quarter note on the second line (G4) and a quarter note on the second space (A4). Below the staff, the letters 'N' and 'R' are written under dashed lines.

A musical staff in treble clef with a key signature of one sharp (F#). It contains two notes: a quarter note on the second line (G4) and a quarter note on the second space (A4). Below the staff, the letters 'S' and 'L' are written under dashed lines.

A musical staff in treble clef with a key signature of one sharp (F#). It contains two notes: a quarter note on the second line (G4) and a quarter note on the second space (A4). Below the staff, the letters 'L' and 'R' are written under dashed lines.

A musical staff in treble clef with a key signature of one sharp (F#). It contains two notes: a quarter note on the second line (G4) and a quarter note on the second space (A4). Below the staff, the letters 'b' and 'L' are written under dashed lines.

A musical staff in treble clef with a key signature of one sharp (F#). It contains two notes: a quarter note on the second line (G4) and a quarter note on the second space (A4). Below the staff, the letters 'L' and 'W' are written under dashed lines.

A musical staff in treble clef with a key signature of one sharp (F#). It contains two notes: a quarter note on the second line (G4) and a quarter note on the second space (A4). Below the staff, the letter 'T' is written under a dashed line.

Wer kann diese Wörter lesen?

W _ S _ R S _ _ L _ N _ _

N _ _ T W _ _ T _ R

N R T

T

N N

N

R

L F F

M S R

B F

Was heisst das?

A musical staff in treble clef with a key signature of one sharp (F#). It contains four quarter notes: F#4, G4, A4, and B4. Below the staff is a dashed line with the letter 'R' underneath it.

A musical staff in treble clef with a key signature of one flat (Bb). It contains four quarter notes: Bb3, C4, D4, and E4. Below the staff is a dashed line with the letter 'R' underneath it.

A musical staff in treble clef with a key signature of one sharp (F#). It contains four quarter notes: F#4, G4, A4, and B4. Below the staff are the letters 'W', 'S', and 'R' positioned under the first, second, and fourth notes respectively.

A musical staff in treble clef with a key signature of one sharp (F#). It contains four quarter notes: F#4, G4, A4, and B4. Below the staff is a dashed line with the letter 'T' underneath it.

A musical staff in treble clef with a key signature of one sharp (F#). It contains eight quarter notes: F#4, G4, A4, B4, C5, B4, A4, and G4. Below the staff are the letters 'R', 'N', 'M', and 'R' positioned under the first, third, fifth, and seventh notes respectively.

A musical staff in treble clef with a key signature of one sharp (F#). It contains four quarter notes: F#4, G4, A4, and B4. Below the staff is a dashed line with the letter 'N' underneath it.

A musical staff in treble clef with a key signature of one sharp (F#). It contains four quarter notes: F#4, G4, A4, and B4. Below the staff is a dashed line with the letter 'I' underneath it.

A musical staff in treble clef with a key signature of one sharp (F#). It contains eight quarter notes: F#4, G4, A4, B4, C5, B4, A4, and G4. Below the staff are the letters 'N', 'T', 'L', 'T', and 'R' positioned under the first, third, fifth, seventh, and eighth notes respectively.

A musical staff in treble clef with a key signature of one flat (Bb). It contains four quarter notes: Bb3, C4, D4, and E4. Below the staff is a dashed line with the letter 'N' underneath it.

A musical staff in treble clef with a key signature of one flat (Bb). It contains four quarter notes: Bb3, C4, D4, and E4. Below the staff is a dashed line with the letter 'W' underneath it.

A musical staff in treble clef with a key signature of one sharp (F#). It contains four quarter notes: F#4, G4, A4, and B4. Below the staff are the letters 'S' and 'I' positioned under the second and third notes respectively.

Was heisst das ?

Musical staff with treble clef, a flat key signature, and notes corresponding to the letters L, T, W, and N.

Musical staff with treble clef and notes corresponding to the letters S and N.

Musical staff with treble clef and notes corresponding to the letter R.

Musical staff with treble clef and notes corresponding to the letter S.

Musical staff with treble clef and notes corresponding to the letter R.

Musical staff with treble clef, a flat key signature, and notes corresponding to the letter S.

Musical staff with treble clef and notes corresponding to the letter L.

Musical staff with treble clef, a flat key signature, and notes corresponding to the letters N and R.

Musical staff with treble clef, a flat key signature, and notes corresponding to the letter R.

Musical staff with treble clef, a flat key signature, and notes corresponding to the letters L, W, N, and N.

Notenwörter

W - P -

L - N - ②

Z N - M - S N - L - M - S

N - W - S L -

R - R -

S - R - U -

N - O - N - R -

R - N -

#

R - W -